



2017 Annual Report St. Mary's Episcopal Church

A community of Christian worship, well-being, and service.

324 East Main Rd Road, Portsmouth RI 02871 ~ 401.846.9700

Rector's Report

Annual meeting time is always a touchstone moment for the church. If Advent is the beginning of the liturgical year, annual meeting is surely the kick off of new fiscal year. We pause to reflect on the year that has been, to give thanks for the people and ministries that have impacted us and to look ahead to where God is calling our church. This is a time for all our members to look forward and consider what they want from the church as well as what they are called by God to offer.

Looking back at 2017, there are two ministries that stand out as highlights of our year. First, we started the year with a dinner party for public servants in Portsmouth and their families. We finished the year with trees of light created with nearly a ton of food given by St. Mary's members and friends. Both of these ministries got us working together toward a common goal, using some of our best gifts – hospitality, feeding, and creativity. We were also caring for those beyond our church, which reflects our passion for service and outreach.

In between these bookend ministries, St. Mary's offered a steady diet of worship, programming, pastoral care, fellowship, and outreach. Leaders supported and cared for property, financial assets and human resources. As we begin 2018, we are facing significant and urgent needs in our Historic Church. Lay leaders are meeting these challenges with faith and hard work. You will hear more about plans and how you can be involved later in the meeting and in the months to come.

The fiscal year that has passed has been one of building a stable foundation for new mission and ministry. Our new treasurer Chris Bartlett has been tireless in his ministry of managing our bookkeeping and financial reports. On the vestry his oversight and planning for the future are instrumental in assessing the long-term health of our financial life. Chris is helping us to see clearly and address our future.

Our staff is a vital part of building a strong foundation for our future. The Rev. Stephanie Shoemaker offered us all great stability and assurance in 2017. In the spring we added two full-time staff members, Kim Bakoledis as Parish Administrator and Gabe Giella as the Director of Christian Formation. Kim continues to improve our ability to serve members and guests with the utmost care and professionalism. Gabe's ministry is having an impact on those seeking deeper faith and relationship with God. This is evident in the large number of people who will be confirmed this February and in the standing room only Bible program he and Mattie Gustafson have offered this winter. These staff positions are key components of our growth and health as a church. Your vestry and I have decided not to add more clergy staff at this time.

Our music program has continued under the direction of Karin Larsen and we are looking forward to the new ministry of Michael Templeton, our Pastoral Musician. Music is an essential component to our worship and we look forward to growing this ministry under their leadership. I am pleased to announce that Jon Walker will begin his work as part-time sexton this week.

Another aspect of foundation building is the new website created by Mattie Gustafson and Murry Edwards. This is a huge development in our ability to communicate to members, and importantly to those who are seeking a church. Since launching the website in the late summer, they continue to update and improve the site, ensuring that it is a tool

for growing faith and our church.

For decades St. Mary's has hosted outside groups, but in 2017 we became more intentional about sharing our campus. We added two new groups who are leasing space, the Sea Rose Montessori School and The Sacred Center, as well as new scout troops, for a total of fourteen outside groups. Welcoming these groups, whether we receive rent or not is a way to connect with people who may be seeking a church. Our new mission includes the core value of well-being, which some of the groups share as a mission. We are more closely tracking the impact of groups using our space to ensure that this strategy and these partnerships are compatible with our mission and our desire to grow and care for our church.

Before turning to our future, I want to offer my deep gratitude to the vestry, especially Linda Drummond, the staff, the Rev. Katherine Ragsdale and the members of St. Mary's for granting me sabbatical time this summer and supporting me as I took this time apart. This time was renewing and healing for me. Since my return in the fall I have fresh energy, hope and commitment to share a new mission and ministry priorities with the people of St. Mary's.

As we begin this new chapter our vestry has adopted the following mission and ministry priorities. You will hear more and be asked to participate more fully in the implementation of these ministry priorities over the coming weeks and months.

Our Mission– St. Mary's Episcopal Church is a community of Christian worship, well-being and service.

Ministry Priorities for 2018

1. Ministry serving **children, youth and families**.
2. Encouraging **current members to take ownership** of the church's mission and ministry.
3. **Growing our church** by welcoming newcomers, honoring them at programs and worship, and supporting membership, discipleship and connection.
4. Educating members and guests in **spiritual practices and Holy Scriptures**.

The renewal of the Historic Church and funding this project is a priority, of course. While this is happening, we will not turn away from the reason we are here. This is the time for us to come together as the body of Christ to worship, grow, and share the life we have found at St. Mary's. We are equipped to do this. God has given us everything and everyone we need – including you and your gifts. Let us begin!

In Christ and with gratitude, Jennifer Pedrick+



2018 Annual Meeting of the Corporation of St. Mary's

- Call to order — *The Rev'd Jennifer Pedrick, Rector*
- Invocation — *The Rev'd Jennifer Pedrick*
- Determination of a quorum — *Mattie Gustafson, Clerk*
- Acceptance of minutes of the 2017 annual meeting of St. Mary's Church
- Acceptance of 2017 annual reports by title as published
- Thanksgiving for Vestry and ministry leaders completing terms, and acknowledging staff and commission chairpersons — *Jennifer Pedrick*
- Nominating Committee Report and Elections — *Linda Drummond, Chairperson of the Nominating Committee*
- Financial and Investment Report for 2017 — *Chris Bartlett, Treasurer*
- Budget for 2018 — *Chris Bartlett*
- Report of Election Results
- New Business
 - New Mission Statement and Vision — *Jennifer Pedrick*
 - Renewal of the Historic Church — *Paul Westrom*
 - Funding for Renewal — *Chris Barker*
- Closing Prayer and Adjourning — *Jennifer Pedrick*

FROM THE CONSTITUTION AND BYLAWS OF ST. MARY'S CHURCH, PORTSMOUTH

Article IV Section 1. Membership. The Members of the Parish shall all be persons who have received the Sacrament of Holy Baptism and who are registered as members of the Parish. The Voting Members of the Parish shall be the rector or minister in charge and all Member communicants of eighteen years and over who are regular worshippers in the Parish church, who for six months preceding the annual meeting have been regular contributors to the support of the Parish, and who are not in arrears in the fulfillment of their pledges to support the Parish.

Minutes from the 2017 Annual Meeting

Sunday, February 5, 2017

The Rector, the Reverend Jennifer Pedrick, called the meeting to order at 12:00 p.m. in St. George's Chapel. She offered many thanks to Murry Edwards, who was responsible for putting together the Annual Report. Murry was also thanked with a bouquet of flowers.

The Rev. Stephanie Shoemaker offered the Invocation.

Mattie Gustafson, Parish Clerk, confirmed that a quorum was present.

It was ascertained that all members present had printed copies of the Annual Report booklet for 2016.

A motion was made and seconded to accept the minutes from the 2016 Annual Meeting. The motion passed.

A motion was made and seconded to accept the annual reports as published, excluding the Nominating Committee report and the proposed budget for 2017. Paul Westrom noted that the date of the Sarah Gibbs Trustee meeting included a typo – the meeting was held on December 20, 2016 – not 2017, as printed in the booklet. The motion passed.

Acknowledgement of Ministry

Senior Warden, Linda Drummond, offered thanks for retiring Vestry leaders -

- Christine Winslow is retiring after 7 years as Church Treasurer. This has been a difficult and demanding position and she takes our deep gratitude with her for her service and commitment.
- Judy Hall – aka “Judy foodie” – is retiring from the Vestry. Her contributions to the Vestry and to the Hospitality ministry of St. Mary's has been brilliant.

Rector Jennifer Pedrick offered thanks to all the chairs of commissions and the folks who work with them, who have worked so hard during the past year.

- Christian Formation – Paul Westrom, Anna Kane, Lisa Lyons, Claire Hebert and Maria Arruda.
- Hospitality – Sara Barker
- Finance – Bill Hall
- All those folks on the Outreach Commission who serve so faithfully, and make such an impact on our community
- Pastoral Care – Pauline Davis
- Property – Dave Monroe
- Stewardship – David Brierley
- Worship – Michelle Freitas

Also thanked were all the folks serving on the Worship Commission chaired by Michelle Freitas; the volunteers involved in our music ministry including Marilyn Hambly, and our staff, Gil Soares, Dorothy Skirzenski, Karin Larsen, Melanie Ventura and Stephanie Shoemaker.

Nominating Committee Report

David Ferkinhoff, chair of the Nominating Committee, presented the slate of nominations for election:

For Treasurer - Chris Bartlett

For Clerk – Mattie Gustafson

For 6 open Vestry positions – Peter Collins, Trish Culver, Steve Downing, Dave Ferkinhoff, Michelle Freitas and Paul Westrom.

For delegates to Diocesan Convention – Dave and Carol Brierley and Mattie Gustafson and for Alternate – Harry Gustafson.

Jennifer asked for further nominations, and hearing none, a motion was made and seconded to close nominations. The motion passed.

The Rector requested that one vote be cast for the positions of Treasurer and Clerk, and for the delegates and alternate to Diocesan Convention. Three motions were made and seconded. The motions passed. Ballots were handed out for the Vestry election.

Senior Warden's Report

Linda D.'s remarks are printed in the Annual Report, but she emphasized that the challenges of transition continue. We have learned a lot over the past year and we are all looking forward to the future. Our consultant has been very helpful; the Vestry is working hard and is very committed.

Financial Reports

Christine Winslow presented her last report as Treasurer. Over the past year there have been many changes and challenges, but she feels we have come out in good shape. We have had quite a few restricted gifts – monies donated for specific projects – the stained-glass windows, the bridal path, the architectural study of our church, etc. and these have been wonderful gifts to our church community. She also thanked Jeff Belden – head of the Investment Commission.

Christine then presented the proposed budget for 2017. A motion was made and seconded that we accept the 2017 budget as presented. The motion passed. Christine W. was given a standing ovation for all her hard work over the past 7 years.

New Business

Rector Jennifer P. thanked Sara Barker, Ann Gizzi, and Fay and Ed Gosling for a delicious brunch. There was no other New Business.

Dave F. presented the results of the Vestry election –
For 3-year terms – Steve Downing, Michelle Freitas, Paul Westrom
For a 2-year term – Dave Ferkinhoff
For 1-year terms – Peter Collins and Trish Culver.

Jennifer Pedrick offered a closing prayer and the meeting adjourned at 12:47 p.m.

Respectfully submitted,
Mattie Gustafson
Clerk

2017 Officers of the Corporation and Vestry

Linda Drummond, Senior Warden, 2018
Dave Monroe, Junior Warden, 2018
Chris Bartlett, Treasurer, 2020
Mattie Gustafson, Clerk, 2020

Terms ending in 2018:

Trish Culver, Peter Collins, Christian Myers

Terms ending in 2019:

Dave Ferkinhoff, Chris Barker, Jenny Williams

Terms ending in 2020:

Steve Downing, Michelle Freitas, Paul Westrom



2018 Nominating Committee Report

Corporation Officers, Vestry Members, and Delegates to Diocesan Convention

The nominating committee presents the following slate for corporation offices, Vestry members, and delegates to diocesan convention, to be voted on at the annual meeting on Sunday, February 4, 2018.

For Senior Warden to serve a three-year term, Murry Edwards.

For Junior Warden to serve a three-year term, Paul Westrom.

For a two-year term on the Vestry, Trish Culver.

For a three-year term on the Vestry, Dave Brierley, Peter Collins, Julie Zecher.

For Diocesan Convention 2018: Mattie Gustafson, Harry Gustafson, Linda Drummond, and as alternate, Claire Hebert.

Respectfully submitted,
Linda Drummond, Nominating Chair

Sarah Gibbs Trust

In January the Farmscapes LLC (dba Aquidneck Farms) lease for the hayfield was renewed for 2017.

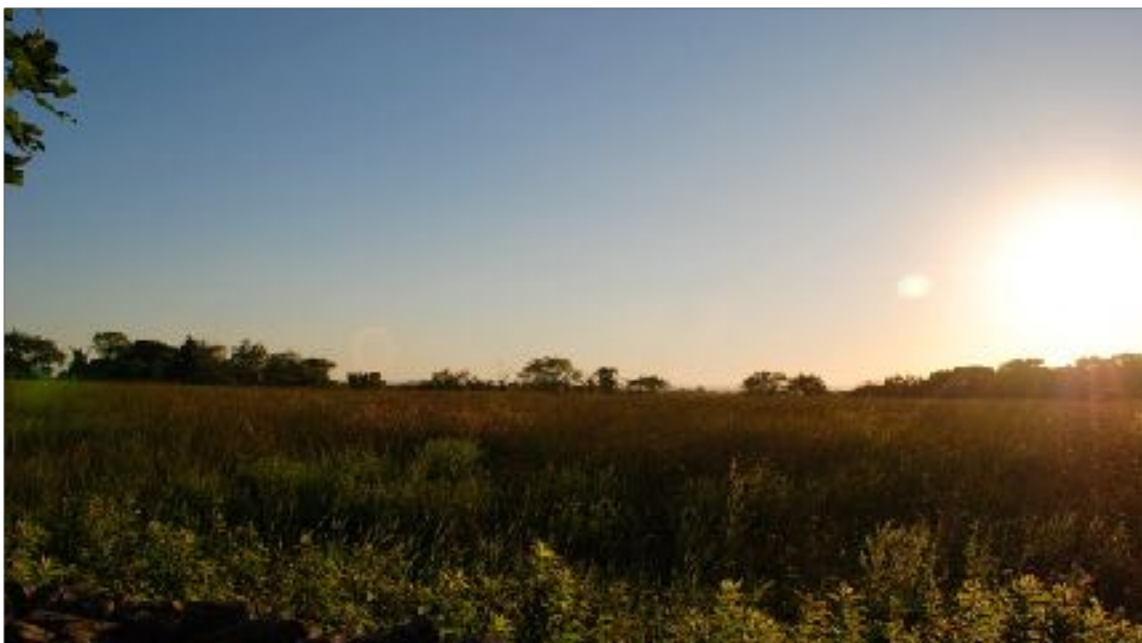
In March Fay Gosling was appointed by the independent trustees Jeff Belden and Jim Vanicek to succeed Jenny Swider as an independent trustee when Jenny decided not to seek reappointment at the end of her 3-year term.

In May the trustees voted to approve the installation of a solar array in the grassy area immediately adjacent to the west side of the community garden.

In November in a response to a request from Ann Hackett of Island Daycare who was considering a purchase of the old parish house from Jim Farrar, the trustees met and rejected a request for use of approximately ten parking spaces in St. Mary's adjacent south parking lot.

In December Jim Vanicek accepted reappointment for a three year term as an independent trustee when his term current expires March 1, 2018.

Respectfully submitted,
Jeff Belden, Chair (ind. 2020)
V. James Vanicek (ind. 2021)
Fay Gosling (ind. 2019),
Christian Myers, Vice Chair (Vestry, 2018)
Paul Westrom, Secretary (Vestry 2019)
Chris Bartlett, Treasurer (Vestry 2020)
The Rt. Rev. W. Nicholas Knisely, Bishop



Senior Warden's Report

It has been a great honor to serve as the Senior Warden of St. Mary's over the last three years. I said "yes" to this position not really knowing what the role entailed but I found out quickly that it would take every skill I possess, and some that I don't, to carry out what was expected of me. It challenged me, kept me from ever being bored and gave me a place to put my energy and my faith. I can't say it was an easy ride, we have been through some difficult times but those tough times were balanced by joy and satisfaction. I have felt more of the latter in the last six months as the Vestry and Rector have dug deep to align our mission, vision, our priorities and the path ahead.

I have been blessed to have worked with and supported by the best Vestry ever. I have never seen a group of people who feel so passionately about their faith community and its future. It has been satisfying to see our infrastructure begin to develop in creative ways through the efforts of both staff and Vestry. Our staff is amazing and deserves huge kudos for their time, talent and commitment. Please take time to thank each of them for a job well done. They have changed the administrative culture, provided very much needed energy and have had great ideas for positive change.

I will treasure the time I have spent with our Rector, Jennifer Pedrick. She has been an incredible partner in this journey. There have been many lessons learned and lots of spirit filled times. She deserves everyone's support as we go forward. Our work is not done. We must grow our church if we are to be vital and sustainable into the future. Every member of this church must be willing to help make that a reality.

I accepted this position to carry out God's work, I felt called to do that. There were times I questioned why the work has been so hard but I always knew that God was guiding, supporting and sometimes carrying me on his back. I wanted to make a difference in the life of this community and I hope that has been realized.

Blessings,

Linda Drummond



Money

2017 FINANCIAL AND INVESTMENT REPORTS

INCOME:

Pledge Income and Loose Offering was very strong, coming in approximately \$5,100 over budget. Income from funerals and facilities use also exceeded budget expectations. Overall, 2017 was a very solid year from a revenue standpoint.

EXPENSES:

The three main items of interest here from an over-budget standpoint are Buildings & Grounds at +\$9,000, Personnel at +\$15,000, and Office Expenses at +\$5,800. The Buildings and Grounds overage related to emergency tree work that was required during the year. Office expenses was the result of some larger-scale organizational and moving work related to staff transition, as well as a new phone system that was required. Finally, the Personnel line item was approved by the Vestry, and relates to our parish programming and growth initiatives, which are critical to our success as a parish moving forward.

ENDOWMENT:

The financial markets were incredibly strong during 2017, and that strength was reflected in our endowment performance, up approximately 18% on the year. Endowment draws were \$307,000, representing approximately 7.8% of the average endowment value.

The Investment Committee met quarterly with the investment manager (Van Liew Capital) to review strategy, holdings and performance. A main topic of discussion throughout the year was how to best protect the endowment from the inevitable market downturn that is highly likely to eventually come. Minor steps have begun to be taken to help cushion the account in the event of such a downturn, and discussions will continue in the coming quarters.

LOOKING FORWARD – 2018 AND BEYOND:

The financial team (Treasurer, Finance Committee, Investment Committee, Rector and Vestry) are keenly aware of the need to reduce the endowment draw going forward. A conscious decision has been made to make a focused, concentrated effort towards growth over the course of the next 18 months or so. Our first and best hope of identifying a sustainable path forward is by growing our pool of pledging brothers and sisters so that our heavy property and plant expenditures can be spread amongst more parishioners, thus reducing the need for endowment draws and moving closer to a more comfortable, 4.5% - 5.5% annual draw. This issue is uppermost in the mind of your Treasurer, and will remain there until a solution or solutions are identified.

Respectfully yours,

Christopher Bartlett CPA, CFP Treasurer

ST. MARY'S CHURCH ANNUAL MEETING TREASURER'S REPORT (Preliminary, 2/4/2018)

GENERAL AND RESTRICTED FUNDS

| <u>INCOME STATEMENTS</u> | <u>Budget</u> | | <u>Budget</u> | | <u>Actual</u> | | <u>Actual</u> | |
|---------------------------------------|----------------------|------|----------------------|------|----------------------|------|----------------------|------|
| | <u>2018</u> | | <u>2017</u> | | <u>2017</u> | | <u>2016</u> | |
| Income: | | | | | | | | |
| Pledges | \$240,000 | 37% | \$240,000 | 41% | \$242,329 | 38% | \$218,124 | 35% |
| Loose Offerings | 16,500 | 3% | 14,500 | 2% | 17,392 | 3% | 14,142 | 2% |
| Donations | 11,800 | 2% | 7,084 | 1% | 32,851 | 5% | 7,217 | 1% |
| Investment Income & Draw | 297,133 | 46% | 266,658 | 45% | 287,067 | 45% | 219,489 | 36% |
| Buildings & Land Use | 54,200 | 8% | 37,052 | 6% | 40,775 | 6% | 39,158 | 6% |
| Fundraising & Thrift Shop | 22,000 | 3% | 25,200 | 4% | 18,926 | 3% | 19,905 | 3% |
| Sale of Old Parish House | - | 0% | - | 0% | - | 0% | 98,854 | 16% |
| Total Income | <u>641,633</u> | 100% | <u>590,494</u> | 100% | <u>639,340</u> | 100% | <u>616,889</u> | 100% |
| Expenditures: | | | | | | | | |
| Personnel | 347,305 | 54% | 292,842 | 50% | 308,028 | 49% | 348,159 | 54% |
| Apportionment | 86,600 | 13% | 96,272 | 16% | 96,272 | 15% | 87,916 | 14% |
| Grounds | 75,000 | 12% | 71,724 | 12% | 76,375 | 12% | 74,303 | 11% |
| Buildings & Utilities | 71,778 | 11% | 71,085 | 12% | 77,383 | 12% | 73,148 | 11% |
| Office | 47,600 | 7% | 40,686 | 7% | 51,465 | 8% | 44,690 | 7% |
| Outreach | 4,500 | 1% | 4,776 | 1% | 4,716 | 1% | 5,957 | 1% |
| Stewardship, Christian | | | | | | | | |
| Formation, Music, Worship | 8,850 | 1% | 13,109 | 2% | 8,750 | 1% | 14,818 | 2% |
| Total Expenditures | <u>\$641,633</u> | 100% | <u>\$590,494</u> | 100% | <u>\$622,988</u> | 100% | <u>\$648,991</u> | 100% |
| Net Operating Excess,(Deficit) | <u>-</u> | | <u>-</u> | | <u>16,352</u> | | <u>(32,102)</u> | |
| Restricted Donations | | | | | 120,731 | | 123,451 | |
| Restricted Expenditures | | | | | <u>68,241</u> | | <u>73,238</u> | |
| Carryforward to Next Year | | | | | <u>\$52,490</u> | | <u>\$50,213</u> | |

| <u>BALANCE SHEETS</u> | <u>12/31/2017</u> | <u>12/31/2016</u> | <u>PLEDGE HISTORY</u> | | | |
|--|--------------------------|--------------------------|------------------------------|-----------------|------------------------|-----------------|
| Assets: | | | <u>Pledged</u> | | <u>Received</u> | |
| | | | <u>\$</u> | <u>#</u> | <u>\$</u> | <u>%</u> |
| Cash in Bank | \$61,324 | \$56,001 | | | | |
| Investments - Endowment | 3,824,815 | 3,482,618 | | | | |
| Diocesan Investment Trust | 235,558 | 213,761 | | | | |
| Total Assets | <u>4,121,697</u> | <u>3,752,380</u> | | | | |
| Liabilities: | | | | | | |
| Restricted Funds Deferred to Next Year | | 50,213 | | | | |
| Other Liabilities | 7,105 | - | | | | |
| Fund Balances: | | | | | | |
| Fund Balance | 4,114,592 | 3,702,167 | | | | |
| Total Liab's & Fund Balance | <u>\$4,121,697</u> | <u>\$3,752,380</u> | | | | |
| | | | 2018 | | | |
| | | | 2017 | \$218,112 | 113 | |
| | | | 2016 | 232,138 | 126 | \$242,329 104% |
| | | | 2015 | 220,372 | 125 | 218,124 99% |
| | | | 2014 | 227,156 | 133 | 220,381 97% |
| | | | 2013 | 197,921 | 134 | 202,510 102% |
| | | | 2012 | 240,221 | 153 | 226,479 94% |
| | | | 2011 | 249,374 | 160 | 238,555 96% |
| | | | 2010 | 237,700 | 158 | 239,196 101% |
| | | | 2010 | 258,250 | 174 | 248,400 96% |

ST. MARY'S CHURCH ANNUAL MEETING TREASURER'S REPORT (Preliminary, 2/4/2018)

RESTRICTED FUNDS

| <u>INCOME AND EXPENDITURES</u> | <u>2017</u> | <u>2016</u> |
|---|------------------------|------------------------|
| Donations: | | |
| Altar Guild | \$0 | \$2,212 |
| Churchyard & Grounds | 650 | 30,663 |
| Community Garden | - | - |
| New Signage | 5,050 | - |
| New Boiler | 41,113 | - |
| Grounds & Parking Lots | - | - |
| Historic Church | 46,268 | 17,400 |
| New Parish House | 7,532 | 11,821 |
| Other | 118 | 7,379 |
| Stained Glass Windows | - | 32,902 |
| Tuck Fund | 20,000 | 20,000 |
| Youth Programs | - | 1,074 |
| | <u>120,731</u> | <u>123,451</u> |
| Expenditures: | | |
| Churchyard & Grounds | - | 9,500 |
| Community Garden | - | - |
| New Boiler | 44,144 | - |
| Gibbs House | 366 | - |
| Grounds & Parking Lots | - | - |
| Historic Church | - | 6,513 |
| New Parish House | 3,508 | - |
| Other | 223 | 5,079 |
| Stained Glass Windows | - | 32,146 |
| Tuck Scholarship Awards | 20,000 | 20,000 |
| | <u>68,241</u> | <u>73,238</u> |
| NET RESTRICTED DONATIONS LESS EXPENDITURES | <u>\$52,490</u> | <u>\$50,213</u> |

STEWARDSHIP

- Developed annual giving campaign based on the theme 'Journey to Generosity'.
- Established a three week speaker series with members of the parish sharing their faith journeys and what stewardship means to them.
- Led annual giving campaign by sending out several mailings, tracking and acknowledging pledges from members, and developing a follow-up plan.
- Assisted in the planning and execution of Harvest Weekend.

Pledging for 2018

Outstanding potential pledges: 15 \$25,970
 Average 2017 pledge: \$1,857
 Average 2018 pledge: \$1,949
 Average Vestry pledge: \$3,560

| Pledges | Number | Amount | Portion of Total | Impact on Budget |
|----------------------------|------------|------------------|------------------|------------------|
| New | 12 | \$11,030 | 5% | \$11,030 |
| Increased | 38 | \$90,770 | 42% | \$11,589 |
| Unchanged | 49 | \$101,022 | 47% | \$0 |
| Decreased | 12 | \$13,570 | 6% | -\$9,560 |
| Non-renewing | 4 | \$0 | | -\$6450 |
| Total as of Jan. 12 | 111 | \$216,392 | 100% | \$6609 |

Contributor: Stewardship Commission, Dave Brierley.



Other Numbers of Note:

Baptism: 4 Confirmation: 0
 Reception: 0 New Members: 12
 Death of Members: 5 Burials: 31
 Burial of Member: 5 Wedding: 0
 Average weekend attendance: 124

FINANCE COMMITTEE

- Simplified presentation of income accounts (e.g., endowment draw on one line).
- Continued to analyze details of all income and expense accounts to understand amounts recorded.
- Cleaned up the restricted gift account. The balance as of 12/31/17 represents gifts for future projects (i.e. restoration of Historic Church).
- Presented an income statement showing a net income from ordinary operations, reporting restricted income (gifts) and related expenditures below the line.
- Ensured cash account surpassed the balance each month for restricted gifts received yet the donor's restriction has not been met.
- Coordinated the internal review of the Church's financial statements in accordance with multiple steps provided by the Diocese.
- Developed a budget model to review two years out from the current year using assumptions to project income and expenses.

Contributor: Finance Committee, Bill Hall.



Ministries

St. Mary's has numerous ministries to promote the worship and well-being of our community. Below are highlights from 2017.

CHRISTIAN FORMATION

- Offered "Life in the Spirit," a seven-week series of deeper discipleship that had an average attendance of 30 people.
- Hosted 3 successful youth nights for St. Mary's youth and guests from other churches.
- Discussed *Embracing an Alternative Orthodoxy* in a five-week lunch series with the Wednesday knitting group.
- Began confirmation preparation for 15 youth and adults.
- Organized intergenerational activities on Sunday mornings in Advent.
- Tried having Godly Play on Wednesday afternoons but returned it to Sunday mornings.

HOSPITALITY

- Hosted the annual meeting luncheon for 100 people.
- Coordinated 10 events (over a 4-month period) though out the summer and early fall ranging from summer picnics and happy hours on the property to gathering at Easton's Beach enjoying music for the summer concert series to pedaling on the rails in Portsmouth.
- Moved the Sunday coffee hour scheduling for the year to online scheduling that allows for people to host coffee hour when it's convenient for them and to ask for substitutes easily.
- Continued to go green by using china rather than paper products for coffee hour.
- Welcomed local first responders, DPW employees, and their families to a "Love thy Neighbor" spaghetti dinner and dance. Thrivent Financial supported this event.
- Celebrated the many gifts in our community and gave thanks at the Gratitude Harvest Dinner.

PASTORAL CARE

- Trained three new Lay Eucharistic Visitors.
- Hosted three collations for families and friends following funeral services at St. Mary's.
- Sent cards to members of St. Mary's community who were sick or grieving; celebrated baptism, a birthday or an award.
- Received valuable advice on card graphics, spiritual quotations, and appropriate prayers to say on cards from the Reverend Stephanie Shoemaker.
- Knitted extravagantly — 52 adult Prayer Shawls, 5 baptismal blankets, 1 lap robe, 76 prayer patches, 14 hat/scarf sets for the Seaman's Church Institute in Newport, 44 hats, 3 baby sweaters, 50 pairs mittens, and 5 baby blankets for the Martin Luther King Center in Newport.

Ministries

WORSHIP

- Welcomed three new members to the altar guild.
- Added two new lectors to the rotation at 5:00 and 10:00.
- Supported and trained multiple lectors for Holy Week, All Saint's Day, Thanksgiving Day, Christmas Day, and Lessons and Carols services.
- Purchased new Gospel Book for the church.
- Commissioned a baptismal font given by Hugh and Sue Hall in memory of Norma Stoddard for St. George's Chapel.
- Used music booklets at the 10:00 service to help people access the musical selections more easily.
- Thanked Marilyn Hambly for her ministry at the 10:00 service as music leader.
- Provided singing leadership at the 8:00 and 10:00 services.
- Welcomed Fran McKendree in July. He led a music workshop attended by 20 people and special prayer service at 5:00 as well as 10:00.
- Led the music at the 6:00 and 9:00 Christmas Eve services with guest instrumentalists.
- Trained and added new acolytes, both adults and teens, into the rotation.
- Offered hospitality to newcomers and members at worship services and funerals.

Contributors: *Christian Formation, Gabe Giella; Pastoral Care, Pauline Davis; Card Ministry, Connie Dealy; Collations, Susan Kelchner; Prayer Shawls, Jeanne Derrah; Altar Guild, Millie Cozzens; Lectors, Stacy Mello; Music, Karin Larsen; Acolytes, Dave Ferkinhoff; Greeters, Lauren Lema.*



Outreach

As a Christian community, St. Mary's strives to share God's generosity with others. St. Mary's has done so in the following ways in 2017.

THE DR. MARTIN LUTHER KING, JR., COMMUNITY CENTER

- Exceeded 2016's donations to the MLKCC by giving 125 gifts, 50 plus rolls of wrapping paper as well as bows, ribbon, and tape for the MLKCC Parent Holiday Workshop.
- Increased food donations to the MLKCC by over 400 pounds from 2016.
- Contributed 5992 pounds of food to the MLKCC made up of —
 - 377 pounds of fresh produce grown in the Community Garden and members' gardens.
 - 5615 pounds of pantry items including 1705 pounds from the Advent through Epiphany food drive supported by members, friends, and groups that meet at St. Mary's.

ST. MARY'S COMMUNITY GARDEN

- Supplied the Pastoral Care Commission with fresh flowers to take to people being visited.
- Leased plots to members as well as people from the local community.



ST. MARY'S SOUP KITCHEN

- Served approximately 600 hungry guests for the year.
- Prepared and served (with the help of very generous volunteers) 160 two-pound gourmet meatloaves, 36 gallons of milk, 150 pounds of potatoes, and scores of homemade desserts.
- Created and served a special December dinner of “loaves and turkey” that was an extension of our Gratitude Harvest Dinner.
- Engaged 60 volunteers in this ministry throughout the year

CLEMENTS' RECEIPTS

- Collected \$718 in Clements' receipts to support the food ministry.

THRIFT SHOP

- Distributed donations equivalent to \$887.75 to an elementary school, a group home, the Maher Center, shoes for Zambia, an Exeter, MA family displaced by fire, blankets and clothing to a homeless couple, and a gift certificate.
- Incorporated volunteers from the Maher Center as well as church volunteers and others into the work schedule.
- Received \$247.20 from Savers for clothing and other items.

Contributors: Christmas Giving Tree, Judy Hall; Soup Kitchen, Dave Monroe; Clements' Receipts, Marcia Monroe; Food Drive, Jon Edwards; Community Garden, Elise LaParle Garcia; Thrift Shop, Priscilla Cousins.



Mortar and Mowing (or Property)

The Property Commission manages the maintenance, repair and renovation of St. Mary's buildings and grounds.

- Completed an historic restoration architectural analysis of the declining condition of the church roof and select flashing and related masonry.
- Completed restoration of the Bridal Path.
- Maintained a prioritized campus Deferred or Near-Term Maintenance Priority List.
- Installed a new natural gas hot water heating system in the church replacing the failed oil-fired steam heating system.
- Negotiated a lease with Sea Rose Montessori School which became our tenant.
- Closed the church to all comers in November because of mold related to water intrusion from roof leaks, failing gutters and ground water intrusion.
- Listed the Oliphant Lane property for sale but withdrew it. The Vestry will make a decision about offering it for sale after completing due diligence.
- A huge thank you to all who participated in this year's Harvest Sunday church maintenance projects especially the many parishioners and scouts and scout leaders who gave so willingly of themselves!

Contributor: Property Chair, Dave Monroe.





Photo Credits: David Brierley, Jerry Culver, Murry Edwards

www.smcportsmouth.org

